



# MAKS ENGINEERING CO.



**STEEL BUILDINGS**

**CLEAN ROOMS**

**ITI CAMPUS**

**FROM CONCEPT TO CREATION**  
ENGINEERING EXCELLENCE IN EVERY PROJECT  
INNOVATIVE DESIGNS, RELIABLE STRUCTURES &  
EXCEPTIONAL QUALITY

# PROJECTS



Discover the innovative world of Maks Engineering Co. through our comprehensive project showcase. As leaders in engineered and prefabricated solutions, we present a detailed portfolio of our signature projects, demonstrating our commitment to excellence and our ability to meet complex challenges with bespoke solutions.

1	<b>Air Craft Hanger, Khajuraho (MP)</b>
2	<b>ITI Campus, Gulawthi, Bulandshahr</b>
3	<b>Barracks for Delhi Police, Indore Police</b>
4	<b>Roof Top Cabins</b>
5	<b>Clean Rooms &amp; Cold Rooms, Badshah Namkeen (Kanpur)</b>
6	<b>Cold Room, Prenity Food</b>
7	<b>Prefabricated Marriage Hall, Chhatarpur, Delhi</b>
8	<b>Prefabricated Gym, Film City Noida</b>
9	<b>Pre Engineered Steel Buildings</b>
10	<b>PUF Panel Prefab Cottages</b>

# AIR CRAFT HANGER - KHAJURAHO (MP)

Maks Engineering Co. proudly presents the Air Craft Hanger project, completed for SHAURYA SIM PVT. LTD., located in the historical setting of Khajuraho, Madhya Pradesh. This facility is a testament to our commitment to enhancing operational efficiency and ensuring safety in aviation infrastructure.



## Project Details:

- **Project Name:** Air Craft Hanger
- **Area:** 10,000 sqft
- **Location:** Khajuraho, Madhya Pradesh
- **Client:** SHAURYA SIM PVT. LTD.



## Innovative Design and Construction:

Our approach involved creating a durable and spacious structure tailored to meet the specific needs of aviation operations. The hanger is equipped with customized features designed to streamline maintenance and enhance safety protocols, setting new standards in the sector.



## Durable Construction:

Built to withstand various environmental conditions, the hanger uses high-grade materials that ensure longevity and reliability. The strategic design facilitates easy access and mobility within the space, accommodating a range of aircraft sizes and types.



# ITI CAMPUS, GULAOTHI, BULANDSHAHR

Maks Engineering Co. is proud to spotlight the ITI Campus in Gulaothi, Bulandshahr—a benchmark in educational infrastructure spanning an impressive 11,364 square feet. This project showcases our expertise in handling large-scale, intricate designs under tight deadlines without compromising quality or safety.



## Project Details:

- **Location:** Gulaothi, Bulandshahr
- **Covered Area:** 11,364 square feet
- **Roof Specifications:** The roofing system incorporates panels up to 20 feet in length with a robust thickness of 80 mm, blending resilience with aesthetic appeal.
- **Wall Panels:** Each panel is precision-engineered to a thickness of 80 mm, ensuring structural integrity and energy efficiency.



## Challenges Overcome:

Transporting and installing 20-foot single-length panels presented significant logistical challenges. Our team's innovation and determination turned these potential setbacks into a showcase of our problem-solving prowess, ensuring timely and safe installation.



## Color and Finish:

A special color of PPGI sheet was selected to enhance the visual appeal and durability of the building, reflecting the campus's innovative spirit and commitment to excellence.

## Completion Timeline:

Set against a backdrop of stringent timelines, our team excelled by delivering this landmark project without delay, demonstrating our capability to manage time-sensitive projects with unwavering attention to detail and client needs.

# POLICE BARRACKS IN DELHI AND INDORE

At Maks Engineering Co., we understand the critical role that a well-designed barracks plays in the effectiveness and well-being of our law enforcement officers. Our recent projects in Delhi and Indore have set new standards in barracks construction, combining functionality with comfort to support the heroes who keep us safe.



## Project Details:

- **Locations:** Delhi, Indore
- **Dimensions:** Each barracks measures 15 feet by 20 feet with a height of 12 feet.
- **Budget:** Efficiently executed within a modest budget of 5-6 lacs.



## Construction Excellence:

- **Wall Panels:** Engineered with 50 mm thick panels, our design prioritizes durability and insulation.
- **Roof Panels:** We utilize dual-thickness roof panels (40/70 mm) to ensure top-tier protection from environmental elements.

## Strategic Design:

Our design philosophy for the barracks focuses on creating spaces that are not only secure but also conducive to rest and readiness. The strategic layout and material selection reflect a commitment to providing environments that enhance the operational effectiveness of police officers.

## Commitment to Quality:

Delivered on time and within budget, these barracks exemplify our dedication to serving those who serve us, with every panel and every square foot meticulously crafted to meet the specific needs of law enforcement. The robust construction and thoughtful design ensure that officers have a reliable base to perform their duties and recuperate between shifts.



# ROOFTOP PUF CABINS AT MULTIPLE PLACES

Maks Engineering Co. brings innovative spatial solutions to urban and industrial landscapes through our Rooftop PUF Cabins. These compact and insulated structures are designed to optimize underutilized rooftop spaces, transforming them into valuable assets for office space, storage, or utility rooms.



## Innovative Design:

Our rooftop cabins are crafted with high-quality Polyurethane Foam (PUF), providing exceptional insulation and durability. The design focuses on maximizing space efficiency without compromising the architectural integrity of the existing buildings.

## Versatile Applications:

Whether you need additional office space, a secure storage area, or specialized utility rooms, our rooftop cabins are tailored to meet diverse functional needs in any urban setting. Their versatility makes them an ideal choice for expanding usable space without the need for ground-level expansion.



## Sustainable and Cost-Effective:

By utilizing the vertical space of buildings, these cabins offer a sustainable solution to space shortages in densely populated areas. They are also cost-effective, avoiding the high expenses associated with traditional construction projects.

## Turnkey Solutions:

Maks Engineering Co. provides complete turnkey solutions from design and fabrication to installation, ensuring that each cabin perfectly aligns with our clients' specific requirements and timelines.



# CLEAN ROOMS FOR DHARAMPAL SATYAPAL GROUP, GREATER NOIDA

At Maks Engineering Co., we specialize in constructing cutting-edge clean rooms using high-performance Polyurethane Foam (PUF) panels. Our collaboration with the Dharampal Satyapal Group in Greater Noida showcases our commitment to engineering environments with minimal contamination, critical for industries requiring pristine conditions.



## Project Insights:

- **Client:** Dharampal Satyapal Group, Greater Noida
- **Duration:** 5-year ongoing partnership
- **Scope:** Installation of thousands of square meters of PUF panel clean rooms.

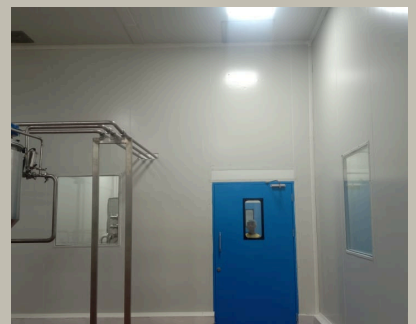
## Technology and Innovation:

Our PUF panels are renowned for their superior insulation properties, crucial for maintaining precise temperature and humidity levels. This technology ensures that each clean room meets stringent industry standards for contamination control.



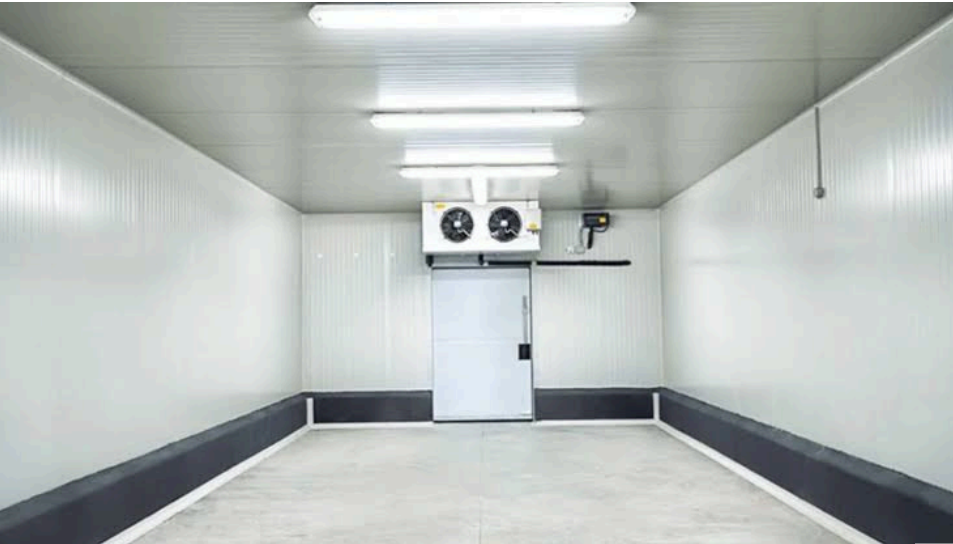
## Extended Impact:

Over the years, our relationship with the Dharampal Satyapal Group has flourished, reflecting our ability to meet and exceed the demanding expectations for controlled environments. The vast area covered by our installations demonstrates the scale and success of this endeavor.



# COLD ROOMS FOR PRINITY FOODS, KANPUR

Maks Engineering Co. takes pride in providing top-tier cold storage solutions using high-performance Polyurethane Foam (PUF) panels, renowned for their superior insulation properties and durability. Our ongoing project with Prinity Foods in Kanpur underscores our expertise in designing facilities that maintain critical low temperatures essential for the storage of perishable goods.



## Project Details:

- **Client:** Prinity Foods
- **Location:** Kanpur
- **Engagement:** Long-term collaboration with regular updates and expansions

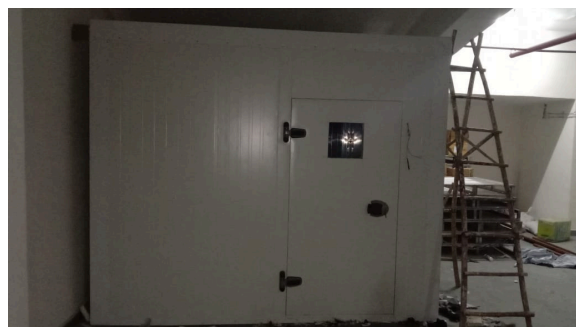
## Innovative Features:

Our cold rooms are engineered to achieve optimal thermal efficiency, which is critical for minimizing operational costs while maintaining the integrity of temperature-sensitive products. The PUF panels not only ensure excellent insulation but also contribute to the overall structural strength of the rooms, making them both durable and reliable.



## Client-Centric Solutions:

At Maks Engineering Co., we understand that each client has unique needs. For Prinity Foods, we have tailored our cold room solutions to support their specific requirements for product storage, demonstrating our flexibility and commitment to client satisfaction.





# PREFABRICATED MARRIAGE HALL - CHHATARPUR, DELHI

Maks Engineering Co. is delighted to unveil our latest project, a stunning prefabricated marriage hall located in the heart of Chhatarpur, Delhi. This elegant venue combines modern design with functional excellence, providing an idyllic setting for special occasions.



## Project Details:

- **Location:** Chhatarpur, Delhi
- **Budget:** 12 Lacs
- **Area:** 2,000 sq ft



## Design and Functionality:

- **Wall and Roof Panels:** Crafted with 50 mm thick wall panels and varying roof thickness of 50/80 mm, ensuring robustness and superb insulation.
- **Aesthetic Features:** The hall's exterior is a testament to modern architecture, featuring sleek PUF panels finished with decorative cladding that enhances its visual appeal. Large windows and glass panels flood the space with natural light, offering stunning views of the surroundings.



# PREFABRICATED GYM - NOIDA SEC-16

Maks Engineering Co. proudly presents the Prefabricated Gym in Noida's vibrant Film City—a state-of-the-art fitness facility that epitomizes cost-efficiency, sustainability, and modern design. Crafted for gym owners seeking an edge in functionality and aesthetic appeal, this project is a testament to innovative construction techniques and environmental stewardship.



## Project Details:

- **Location:** Noida Sec-16, Film City
- **Budget:** Rs. 500,000
- **Dimensions:** 25 ft x 25 ft

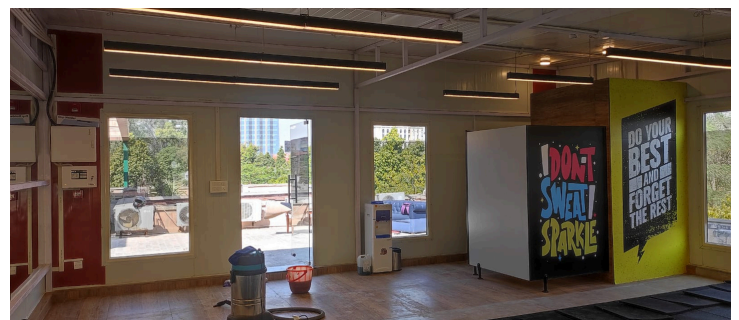
## Construction Highlights:

- **Wall and Roof Panels:** Utilizes 60 mm thick walls and 65 mm roof panels, constructed from high-quality PUF, ensuring optimal insulation and energy efficiency.
- **Advantages:** The use of PUF panels not only reduces construction time and costs but also provides superior thermal control, making the gym environment more comfortable for users year-round.



## Functional and Stylish:

The gym's sleek, modern design is not just about looks—it's built to enhance user experience, ensuring that every workout is performed in comfort. The design incorporates spacious interiors and robust, weather-resistant materials that stand up to the rigors of daily use.



## Sustainable Building Practices:

In line with our commitment to sustainability, the materials used are environmentally friendly, contributing to a lower carbon footprint while maintaining durability and functionality.



# PRE-ENGINEERED STEEL BUILDINGS AT MULTIPLE PLACES

Maks Engineering Co. is at the forefront of constructing pre-engineered steel buildings (PEBs), recognized for their versatility, durability, and efficiency. Our PEBs are engineered to meet the diverse needs of our clients, providing solutions that are both cost-effective and time-efficient.



## Advanced Engineering:

Our PEBs are designed using the latest steel technologies, ensuring that each structure is robust, weather-resistant, and adaptable to a variety of uses—from warehouses and factories to commercial centers and community halls.



## Fast-Paced Construction:

The on-site assembly of our steel components is streamlined to minimize construction timelines and reduce labor costs. This efficient process allows for quicker occupancy and faster return on investment, making our PEBs a smart choice for businesses looking to expand quickly.



## Sustainable Practices:

We are committed to sustainability, utilizing materials and methods that reduce environmental impact. Our steel buildings are not only built to last but are also designed to be energy efficient, reducing the overall carbon footprint.

## Versatile Applications:

Whether you need a large industrial space or a small community building, our pre-engineered steel buildings can be customized to fit your specifications, ensuring that your new space meets all your functional and aesthetic requirements.



# PUF PANEL PREFAB COTTAGES IN BAROT VALLEY, HIMACHAL

Nestled in the picturesque Barot Valley of Himachal, Maks Engineering Co.'s latest project introduces eco-friendly prefab cottages designed to blend seamlessly with the tranquil hillside. These cottages are a sanctuary for those seeking a serene retreat, engineered with cutting-edge PUF panels to deliver unmatched comfort and energy efficiency.



## Project Essentials:

- **Location:** Barot Valley, Himachal Pradesh
- **Area:** 200 sq ft per cottage, customizable to client specifications
- **Budget:** 3 lakhs per cottage



## Design Philosophy:

Each cottage is a model of sustainable construction, utilizing advanced insulation technology that ensures each structure is both temperature-controlled and energy-efficient. The design emphasizes minimal environmental impact, with materials and aesthetics chosen to complement the natural surroundings.

## Living Features:

These cottages offer a perfect blend of modern amenities and rustic charm, providing durable and comfortable living spaces ideal for hillside conditions. The integration of PUF panels not only enhances thermal efficiency but also ensures that each cottage is built to last, even in challenging environments.



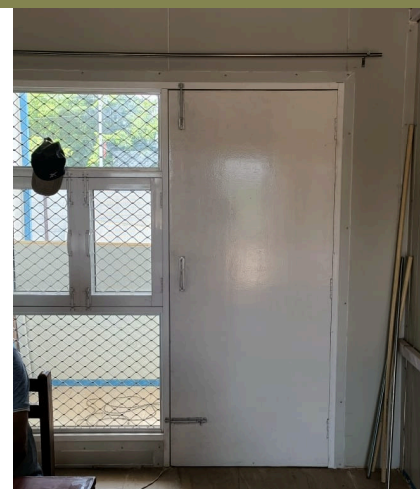
# PUF PANEL PREFAB COTTAGES

Escape the everyday with a custom cottage by MAKS Engineering. We blend modern design with functionality to create your perfect retreat. Whether it's a cozy hillside hideaway or a serene lakeside getaway, our expertly crafted cottages are tailored to fit your dream vision. Trust us to deliver excellence and durability in every build. Let's make your cottage dream a reality!



## What Sets Our Cottages Apart?

- **Tailored Designs:** Each cottage is a unique reflection of the owner's tastes, crafted with expert precision.
- **Quality Materials:** We use only the finest materials, ensuring durability and a premium finish that stands the test of time.
- **Energy Efficiency:** Our designs prioritize sustainability, optimizing energy use and reducing costs.
- **Full-Service Expertise:** With years of experience, we manage all aspects of construction, ensuring a seamless and stress-free process.



Whether nestled in the mountains, by the lakeside, or in your favorite hideaway, a MAKS Engineering cottage offers the perfect blend of luxury, comfort, and peace of mind.

**Ready to build your dream cottage? Contact us today, and let's bring your vision to life!**

# PUF PANEL PREFAB COTTAGES

Imagine a place where every corner reflects your style and every detail embodies your comfort —MAKS Engineering turns that vision into reality with bespoke cottages designed just for you. From concept to construction, our dedicated team collaborates with you to create not just a building, but a sanctuary tailored to your lifestyle and preferences.



MAKS Engineering specializes in custom doors, windows, and shelves, crafted to enhance both functionality and style in any space.



**Multiple Partition Shelves**



**Dual Partition Shelves**



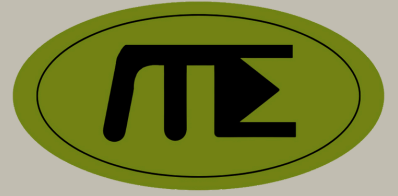
**PUF Panel Doors**



**Ventilated Window**

# Maks Engineering Co.

Engineering Innovation, Building Excellence



Premium Grade Durable Material  
  
Trusted by Industry Professionals

## CONTACT US

☎ Sales Enquiry: +91-8745016169

✉ sales@maksengineeringcompany.com

🌐 www.maksengineeringcompany.com

📍 **Head Office**  
Ansal Plaza, Vaishali  
Sector-1, Ghaziabad  
Uttar Pradesh-201010